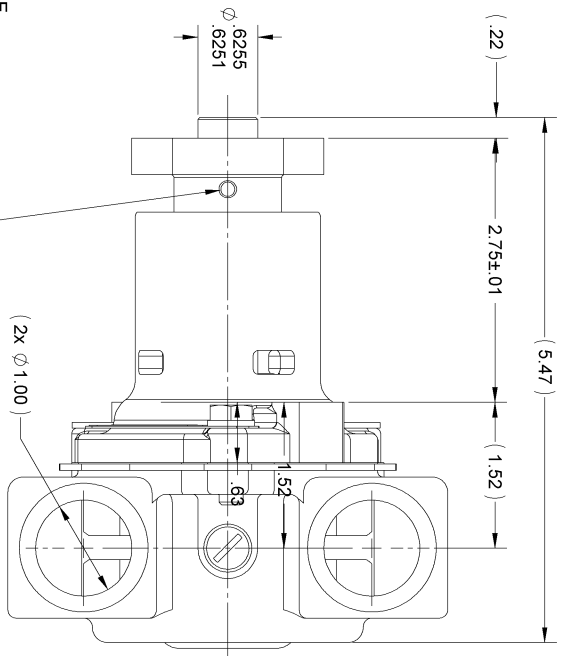
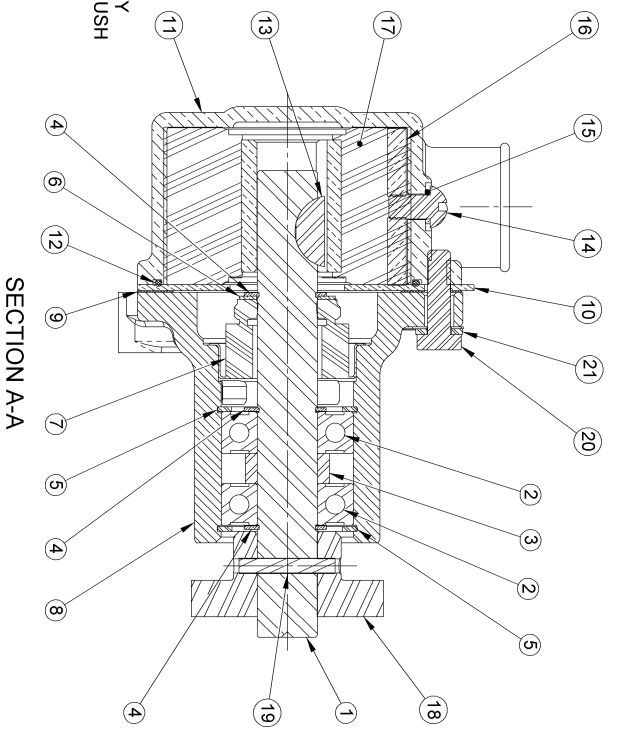


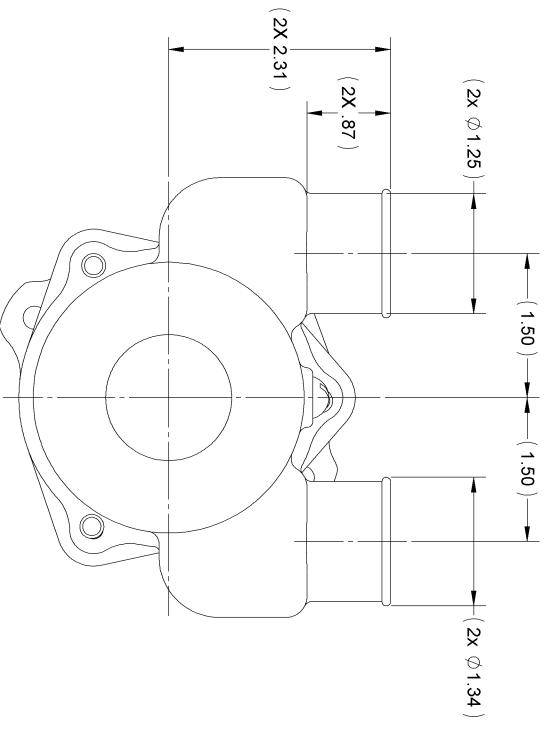
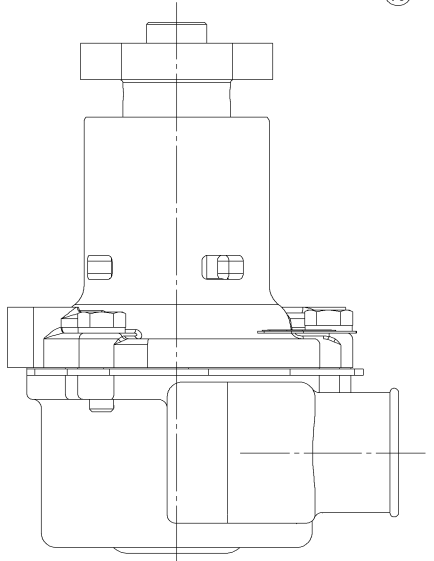
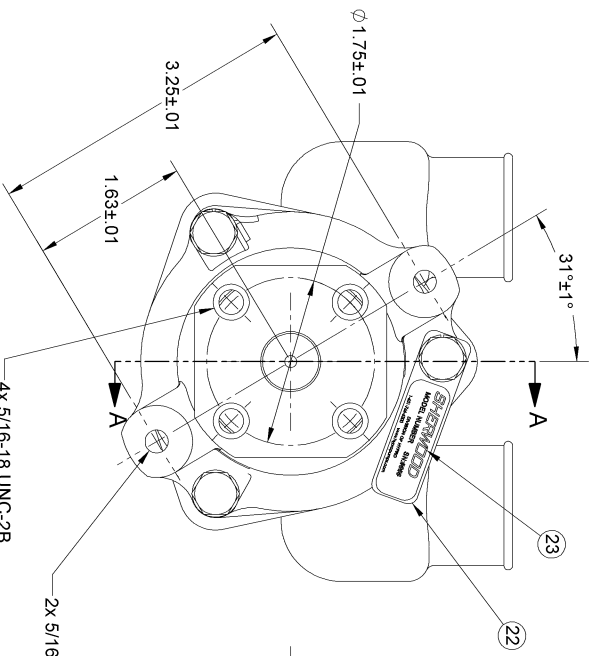
ITEM NO.	PART NUMBER	DESCRIPTION	QTY.
1	12596	SHAFT	1
2	12211	BALL BEARING	2
3	05133	SPACER	1
4	04258	EXT. RETAINING RING	3
5	04259	INT. RETAINING RING	2
6	04264	FLAT WASHER	1
7	12314	TYPE 6A SEAL/SEAT ASSY	1
8	12328	BODY - MACHINED	1
9	12855	GASKET	1
10	12856	WEAR PLATE	1
11	12907	HOUSING - MACH	1
12	12231	O-RING	1
13	04432	WOODRUFF KEY	1
14	19995	SCREW 1/4-20 ROUND HD	1
15	19996	CAM WASHER	1
16	10944	CAM	1
17	10615	RUBBER IMPELLER	1
18	10769	HUB - PULLEY	1
19	09420	TAPER GROOVE PIN	1
20	12857	1/4-20 HHCS	3
21	12710	LOCKWASHER	3
22	13285	TAG	1
23	23083	LABEL	1



∅ 5/32" DRILL THRU TO OTHER SIDE AT ASSEMBLY  
DEBURR, PRESS TAPER GROOVE PIN, ITEM 16, FLUSH



- NOTES:
- APPLY BEAD OF PERMATEX AROUND THREADED HOLE IN CAM PRIOR TO ASSEMBLY. (ITEM 16).
  - USE WATER ONLY WHEN INSTALLING TYPE 6A SEAL/SEAT ASSY. (ITEM 8).
  - USE COOLANT TO AID IN INSTALLATION OF RUBBER IMPELLER. (ITEM 17).
  - TORQUE 1/4-20 HHCS TO 5 - 8 FT/LBS. (ITEM 20).
  - PRESSURE TEST PUMP TO 20 - 30 PSI.
  - PRINT "G56" AND "DATE CODE" ON LABEL. (ITEM 23).



REV.	ICN.	DESCRIPTION	CHKD.	DATE
F	6527	REMOVED 12954 SEAL ASSY & 10519C CAM SCREW ASSY ADDED 19995 CAM SCREW & 19996 CAM WASHER NOTE WAS USE FAC-EASE OR EQUIV. REDIMENSIONED	PFB	11/15/2007
E	6195	ADDED NOTES, REDRAWN ON NEW FORMAT	PB	6/15/2007

**SHERWOOD**  
A Div. of **Hippo Corporation** A PERTRAC COMPANY  
375 Fifth Avenue NW, New Brighton, MN 55112 (651) 764-6300

DRAWING BASED ON ASME Y14.5M-1994 DO NOT SCALE PRINT  
SCALE SHEET NUMBER 1 OF 1  
THIRD ANGLE PROJECTION

REPLACES PART NO. \_\_\_\_\_ REV. \_\_\_\_\_  
DWG BY: \_\_\_\_\_  
CHECKED BY: \_\_\_\_\_  
APPROVED BY: \_\_\_\_\_  
DATE: \_\_\_\_\_

THIS DRAWING IS THE PROPERTY OF HIPPO  
AND WITHOUT WRITTEN AUTHORIZATION  
SHOULD NOT BE REPRODUCED OR  
PART NUMBER \_\_\_\_\_

**RUBBER IMPELLER PUMP**  
**G56**