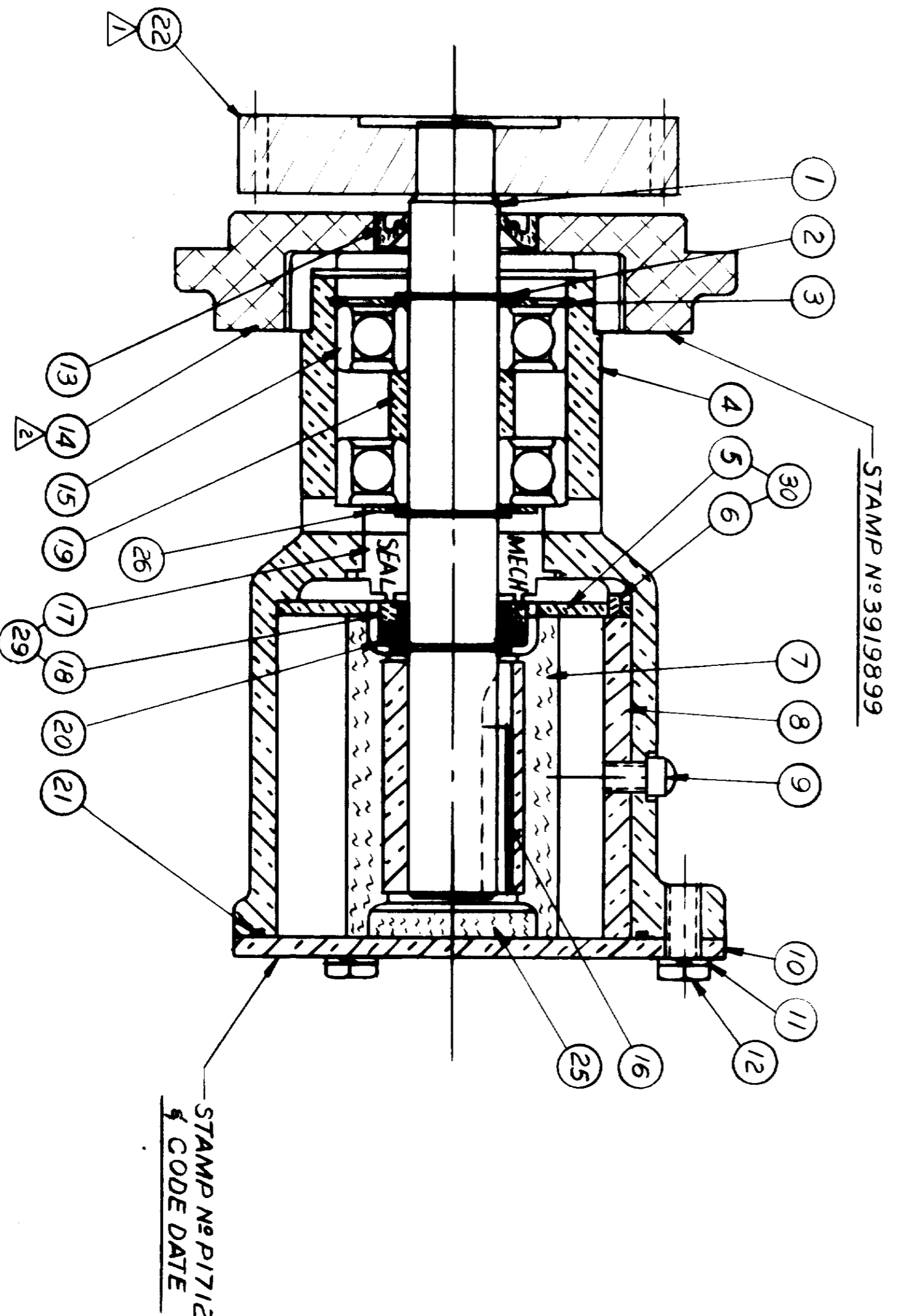
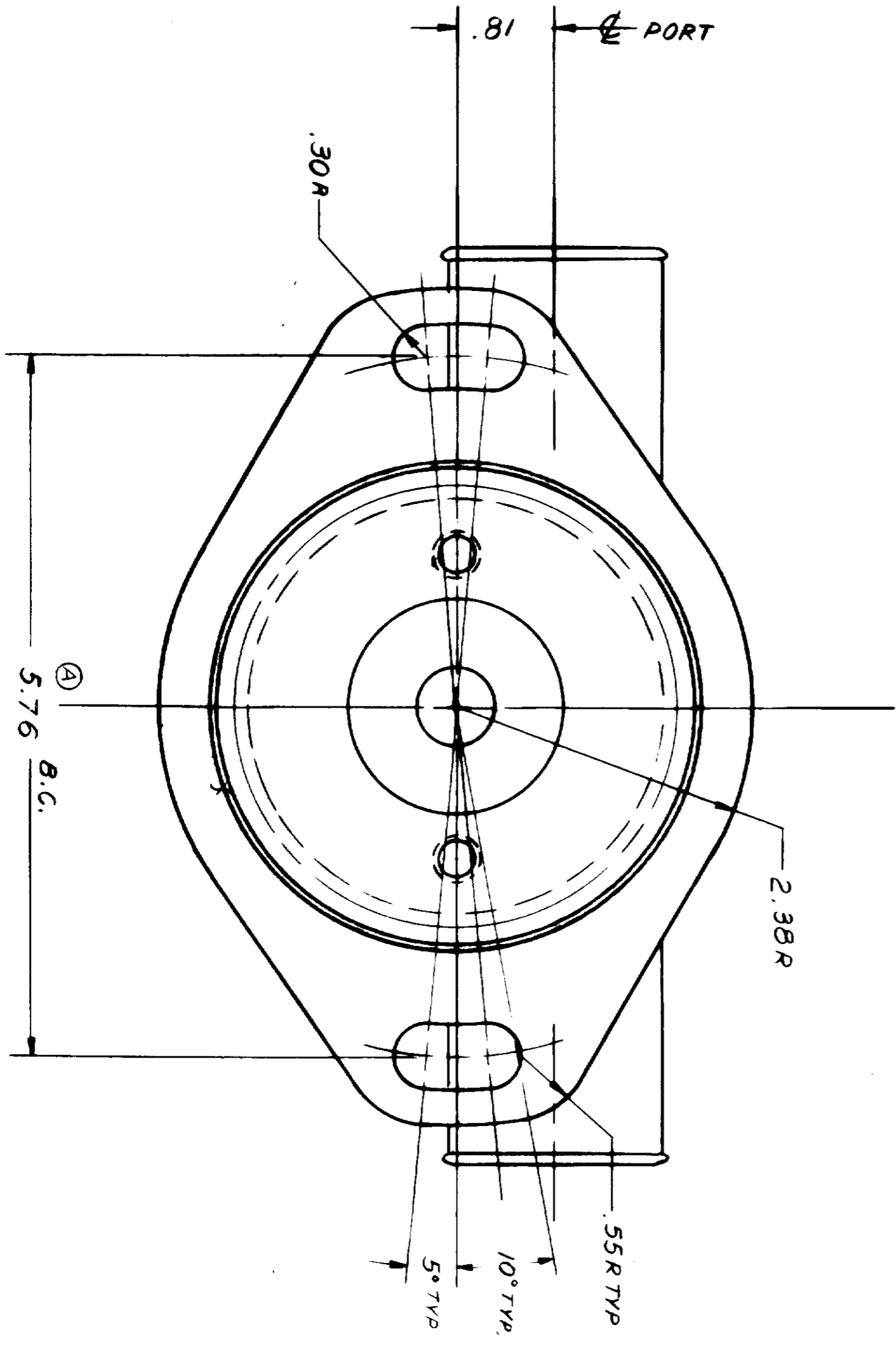
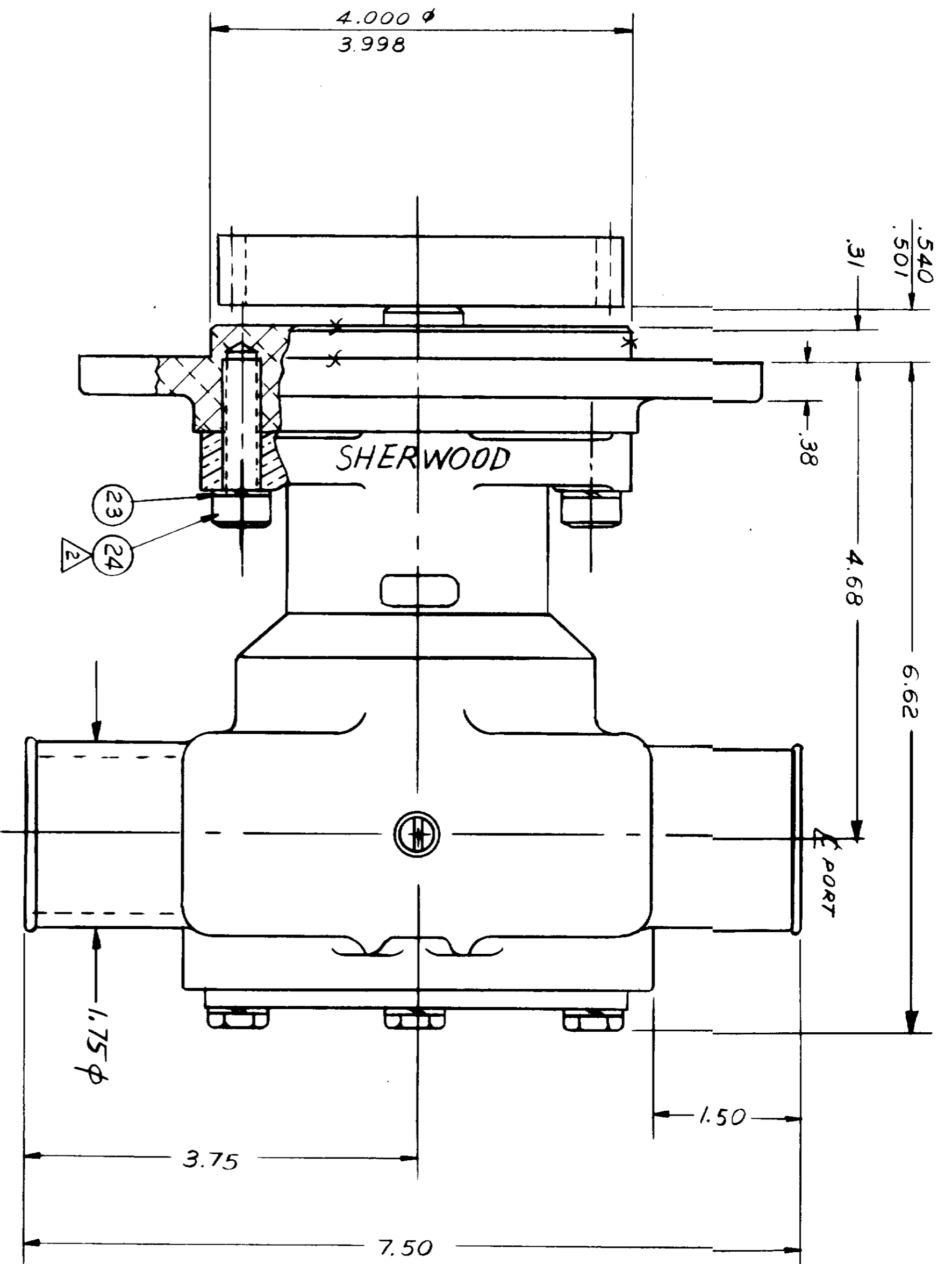


ITEM	DESCRIPTION	REQ'D	PART NO.
1	SHAFT	1	16046
2	EXT. RET. RING	3	15952
3	INT. RET. RING	1	15942
4	HOUSING	1	18385
5	END PLATE	1	16047
6	RD. HD. PIN	1	18442
7	RUBBER IMPELLER	1	17000
8	CAM	1	18271
9	CAM SCREW	1	19673
10	COVER PLATE	1	18742
11	5/16 LOCKWASHER	3	15944
12	5/16 HEX. CAPSCREW	3	16029
13	LIP SEAL	1	18971
14	FLANGE MOUNTING ADAPTER	1	19380
15	BALL BEARING	2	15951
16	KEY	1	19209
17	MECH. SEAL	1	15954
18	SEAL SEAT	1	15953
19	SPACER	1	15940
20	FLAT WASHER	1	15959
21	O-RING	1	15945
22	GEAR-EXT. DRIVE	1	14184
23	FLAT WASHER	2	18171
24	3/8 SOC. HD. BOLT	2	16030
25	RUBBER CAP	1	19210
26	FLAT WASHER	2	19614
29	SEAL & SEAT ASSY	1	15955
30	END PLATE-PIN ASSY	1	18441
31	MINOR SERVICE KIT	1	18284
32	MAJOR SERVICE KIT	1	18285



NOTES:
 1. ITEM N° 22 FURNISHED BY CUMMINS. PART N° 3902175
 2. DECREASE ITEM N° 24 & TAPPED HOLES IN ITEM N° 14
 PRIOR TO ASSEMBLY WITH "LOCTITE" N° 25556
 FOLLOWED BY "LOCTITE" N° 252 TORQUE BOLTS 18 LB-FT

REV.	DATE	DESCRIPTION
A	5/76	CORRECTION FROM 5.66
B	1/28	5/21/76
C	1/28	5/21/76
D	1/28	5/21/76
E	1/28	5/21/76

DATE	BY	CHKD	APP'D
AVB	8/19/50		

CONFORMS TO I.M.A. STANDARDS
 CONCENTRICITY .001
 ROUNDNESS .002
 RADIUS .001
 SURFACE TOOLERANCE
 FINISH STOCK OF
 MACHINING TOLERANCE INCHES
 FILETS & RADIUS
 CAST DIMENSIONS ± .02
 UNLESS OTHERWISE SPECIFIED

SHERWOOD
 RUBBER IMPELLER PUMP
 SEE DETAILS P1712